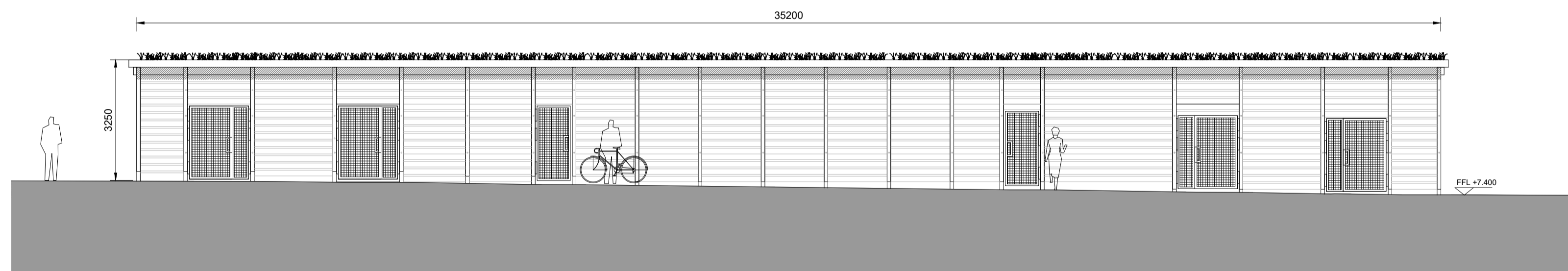
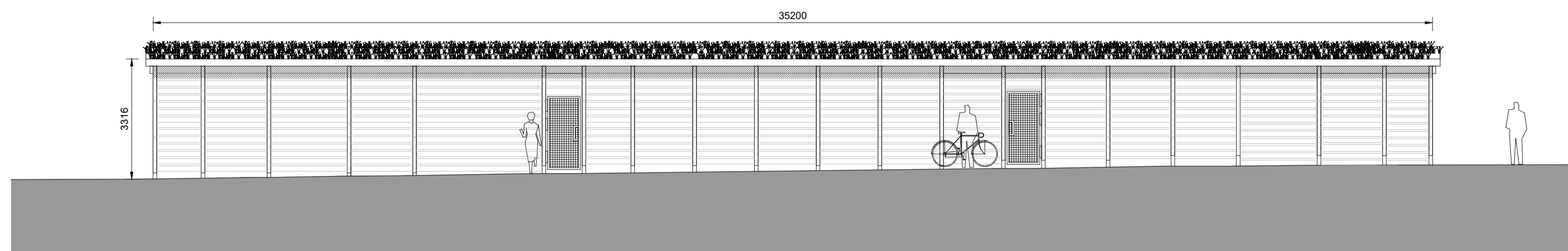


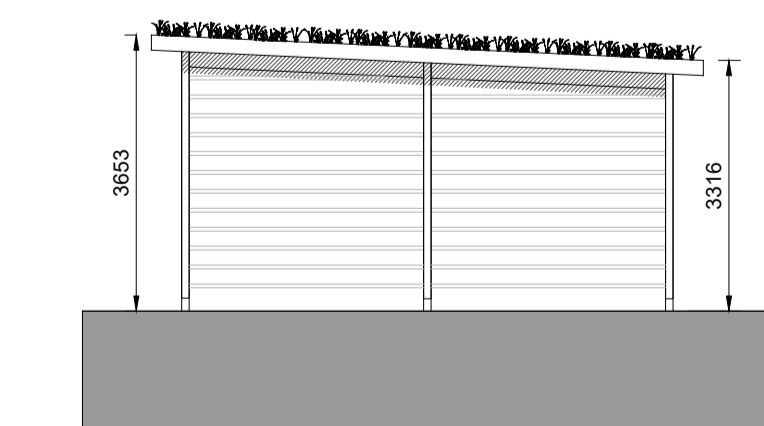
BLOCK 11 - SECTIONAL ELEVATION C-C LOOKING NORTH
SCALE 1:200



FRONT ELEVATION BIKE & BIN STORAGE
SCALE 1:100



REAR ELEVATION BIKE & BIN STORAGE
SCALE 1:100



SIDE ELEVATION BIKE & BIN STORAGE
SCALE 1:100



- © This drawing is copyright.
 1 Do not scale this drawing.
 2 Errors and omissions to be immediately notified to Architect.
 3 All dimensions to be checked on site.
 4 To be read with relevant Engineers drawings.

Notes:
 All dimensions in millimetres

External Finishes:
 External Wall Finish:
 Selected brick finish with aluminium cills, trims and caps. Contrasting brick as indicated. Stone or concrete capping to parapets.

Pigmented render finish locally to internal deck elevations.

Wood siding and galvanised steel gates to bike sheds.

Roofs:
 Flat single-ply or metal pitched roofs generally with stone / concrete capping to parapets.
 Green roofs to bike sheds.

Windows/Doors:
 Alu-wood windows to selected colour. Painted timber doors at own-door ground floor apartments.

Selected metal glazed doors to circulation cores. Timber or painted timber solid doors with ventilation louvres to bin store doors.

Pre-cast concrete or steel framed canopies over entrance areas.

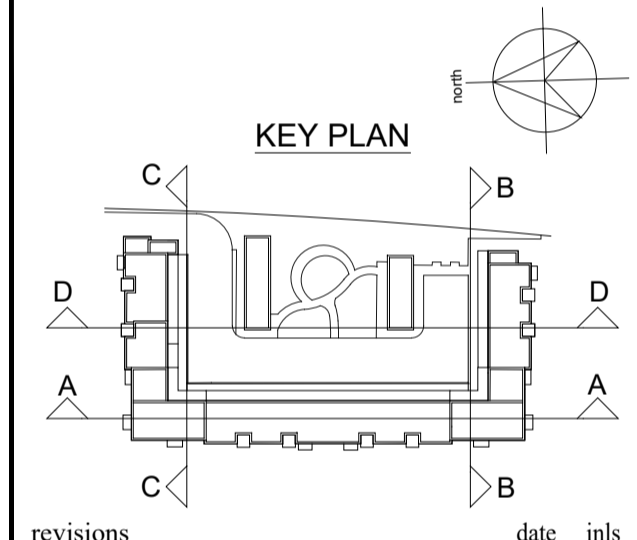
Opaque glazing to communal stair core windows which overlook existing or future adjacent developments.

Glazed 1.8m high wind screens as indicated.

External:
 Metal/Opaque Glass guarding at balconies
 Painted metal railing and brick at deck access walkways.

Soft and Hard landscape as shown on landscape architect's drawings.

Rainwater goods:
 uPVC or aluminium downpipes.



revisions	date	inls

description	drawn by	checked by	date	scale
Block 11 Sectional Elevation C-C Bike & Bin Store Elevations & Reference Images	1640 P 202	RB	JUL '19	as shown

job	client
Block 11, Clongriffin, Dublin 13	Gerard Gannon Properties

issue
 Clongriffin SHD 1
 Planning

CONROY CROWE KELLY
 ARCHITECTS & URBAN DESIGNERS

65 MERRION SQUARE
 DUBLIN 2

phone 01 6613990 fax 01 6765715
 email info@cck.ie